



SPEEDY SPREAD



**FERTILIZER AND LIME
TRAILER SPREADERS
MODELS: 507, 508, AND 509**



**OWNERS MANUAL
General Fertilizer Equipment INC.
1-800-277-4377
SPEEDYSPREAD.COM
FAX # 336-854-5796**

JUNE 2003

IMPORTANT CONTACT INFORMATION

TOLL FREE NUMBER: 800-277-4337

LOCAL NUMBER: (336) 299-4711

FAX NUMBER: (336) 854-5796

SHIPPING ADDRESS:

GFE

429 EDWARDIA DR.

GREENSBORO, NC 27409

BILLING ADDRESS:

GFE

PO BOX 19409

GREENSBORO, NC 27419

BEN COSTON: SALES

MARSHALL PIKE: SALES

SHANE PIKE: SALES AND SERVICE

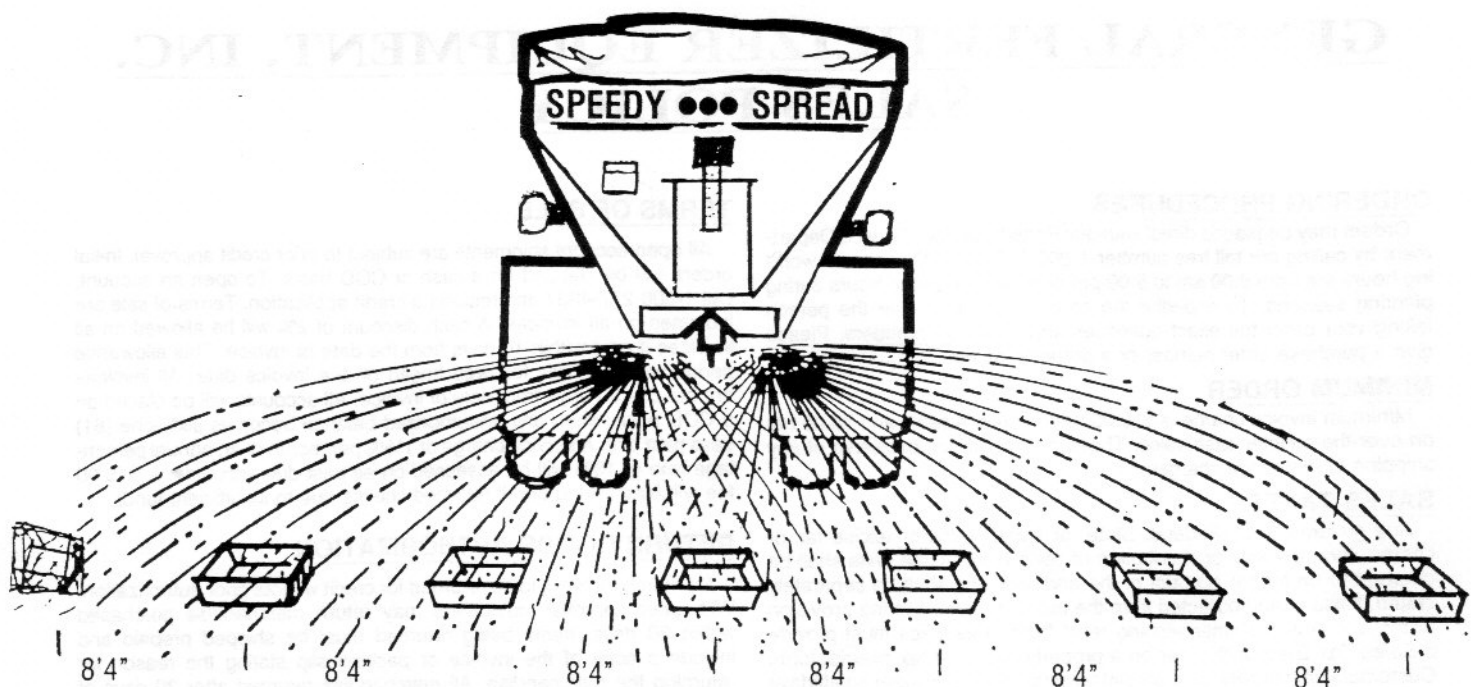
JAY PIKE: PARTS

PLEASE NOTE

**PARTS ORDERS PLACED BY 2 PM WILL BE SHIPPED
SAME DAY (AS ITEMS ARE AVAILABLE)**

VISIT US ON THE WEB AT:

WWW.SPEEDYSPREAD.COM



HOW TO CHECK YOUR SPREAD PATTERN

1. Secure seven (7) **square** cake pans—the largest you can buy or plastic green house trays.
2. Find seven (7) rain gauge tubes or similar clear plastic or glass cylinders.
3. Arrange your cake pans evenly in a line as wide as your spread pattern. Make sure the ground is **flat**, free from plant growth higher than the pans, and pans are **perfectly level**.
4. Drive over and between your pans at your usual speed, spreading your regular fertilizer material at one of your usual settings. Straddle the **center** pan. Do this several times **always** in the same direction, until you have enough material in one or more of the pans to at least half fill a cylinder.
5. Pour pan number 1 in cylinder number 1, pan number 2 in cylinder number 2, etc. Set your cylinders in a row. You can see which cylinders have more than others. The amount you see in each cylinder is an indication of what you are putting on the ground.

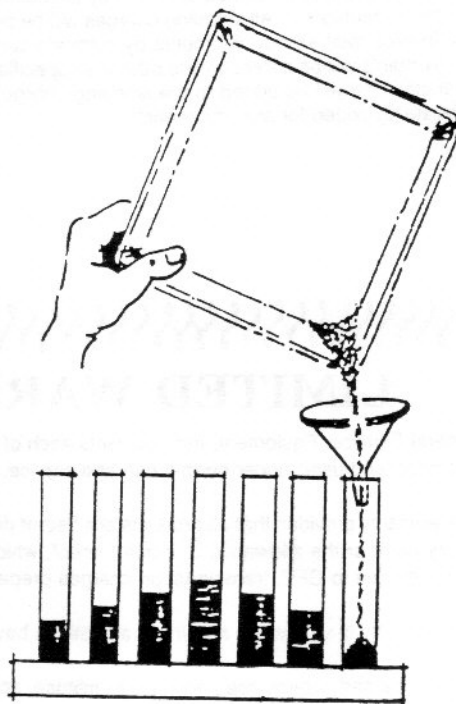
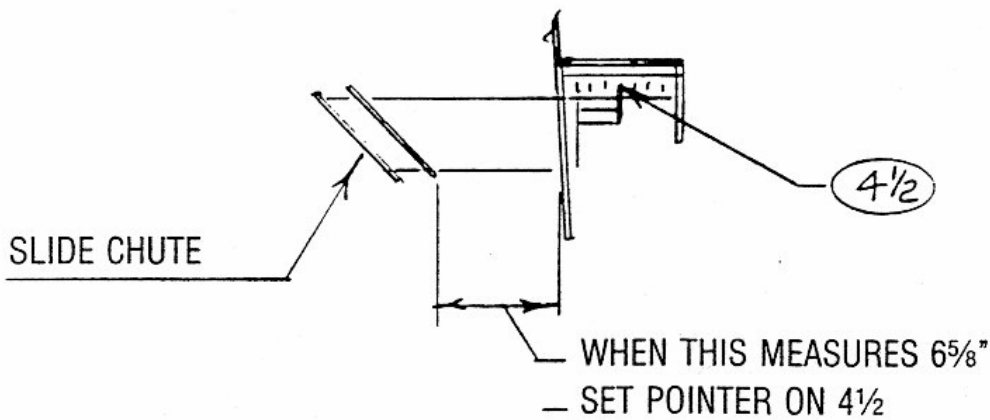
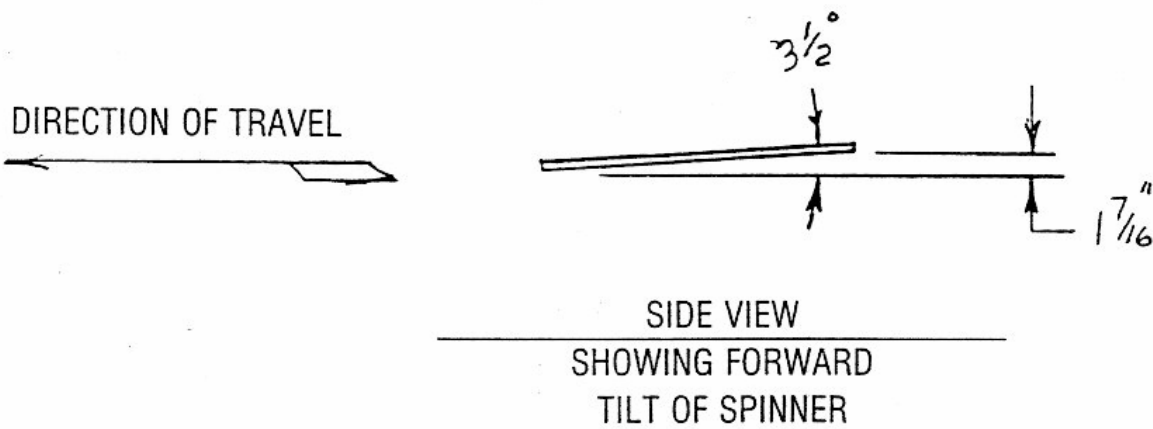
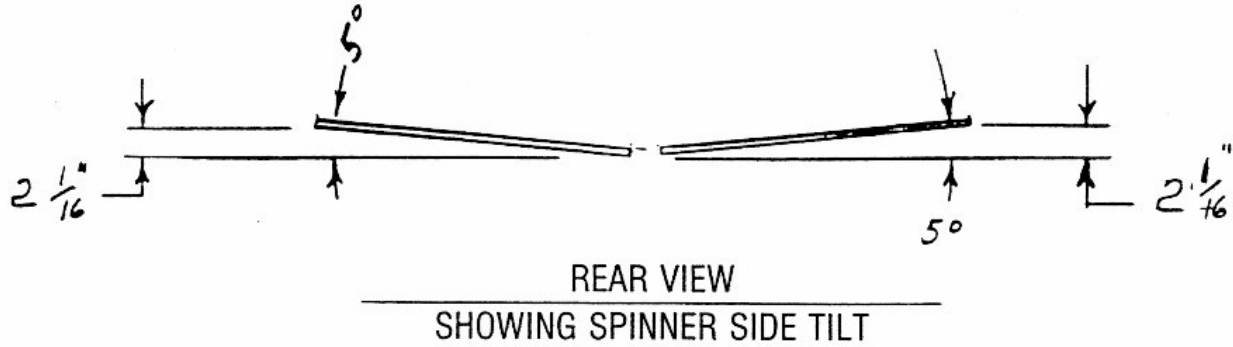


Figure what the average height of material should be in all cylinders. Compare this average with what you have in each cylinder. This tells you how far each portion of your swath is off—also how close together you must drive on each pass. Make a record of each pattern you check. Note the application rate and material so that you can compare it against future spread pattern checks.

SPEEDY SPREAD

DIMENSIONS



ALIGNMENT OF CHUTE POINTER



SPEEDY RATE CHART

RATES IN POUNDS PER ACRE



GATE SETTING	FERTILIZER						LIME 40' SWATH HIGH SPKT. RATIO 100 lb/cu. ft.
	50' SWATH			LOW SPROCKET RATIO			
	MATERIAL WEIGHT PER CUBIC FOOT						
	50#	55#	60#	65#	70#	75#	
1	96	106	115	124	134	144	536
1 1/2	144	159	172	186	201	216	804
2	192	212	230	248	268	288	1072
2 1/2	240	265	288	310	335	360	1332
3	288	318	345	372	402	432	1592
3 1/2	336	371	403	434	469	504	1846
4	384	424	460	496	536	576	2101
4 1/2	432	477	520	558	603	648	2319
5	480	530	575	620	670	720	2569
5 1/2	528	583	633	682	737	792	2819
6	576	636	690	744	804	864	3080
6 1/2	624	689	748	806	871	936	3330
7	672	742	805	868	938	1008	3580
7 1/2	720	795	863	930	1005	1080	3830
8	768	848	920	992	1072	1152	4080
8 1/2	816	901	978	1054	1139	1224	4330

INSTRUCTIONS:

1. DETERMINE PRODUCT WEIGHT WITH DENSITY METER
2. INSTALL CHAIN ON CORRECT SPROCKET RATIO: OUTSIDE (HIGH) FOR LIME - INSIDE (LOW) FOR FERTILIZER
3. SET GATE FOR DESIRED AMOUNT PER ABOVE CHART
4. INSTALL INSERT WHEN SPREADING FERTILIZER
5. FOR FERTILIZER ALIGN CHUTE POINTER WITH SAME NUMBER AS GATE
6. FOR LIME ALIGN CHUTE POINTER WITH "LIME"
7. RAISE BACKPLATE OPENING FOR LIME
8. SWATH WIDTH IS DISTANCE FROM CENTER OF TRACK TO CENTER OF TRACK
9. FOR FERTILIZER ON HIGH RATIO - MULTIPLY AMOUNT SHOWN BY 2.24
10. FOR LIME ON LOW - MULTIPLY AMOUNT SHOWN BY .446



GENERAL FERTILIZER EQUIPMENT, INC.

429 EDWARDIA DRIVE • P.O. BOX 19409 • GREENSBORO, N.C. 27419-9409 • 336-299-4711

1-800-277-4337

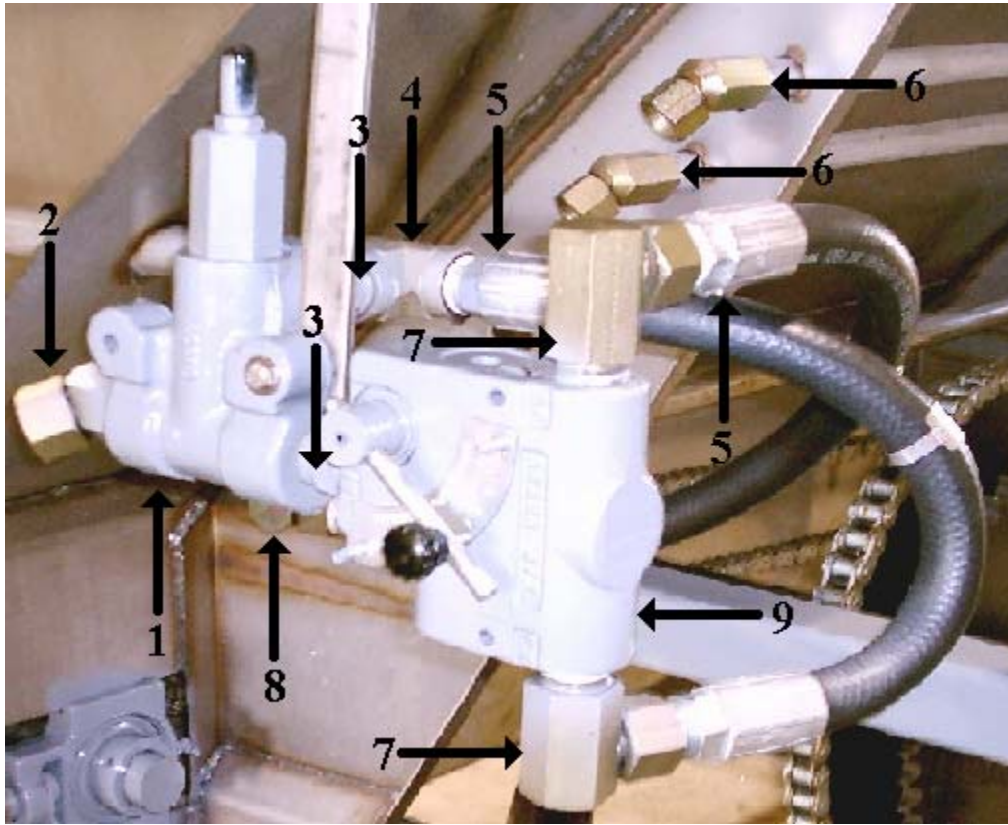
PART: S-1-15

SMALL GRAIN CHART

POUNDS PER ACRE

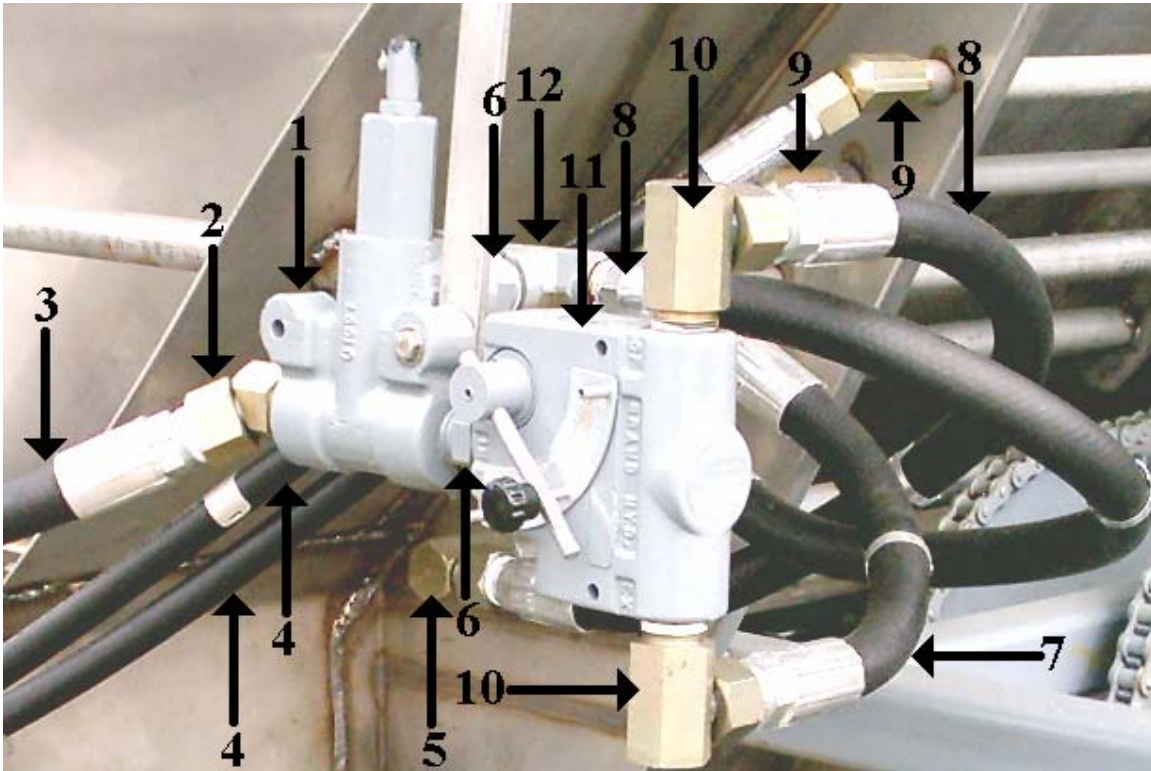
<u>GATE SETTING</u>	<u>OATS</u>	<u>RYE</u>	<u>WHEAT</u>
1	65.5	76	83
1 ½	98.5	114.5	125
2	131	152	166
2 ½	164	190.5	208
3	196.5	228	249.5
3 ½	228	264.5	289
4	262	302	332.5
4 ½	295	342.5	374.5
5	<u>327</u>	<u>380.5</u>	<u>416</u>
	37#/BU.	43#/BU.	47#/BU.

Valve Assembly



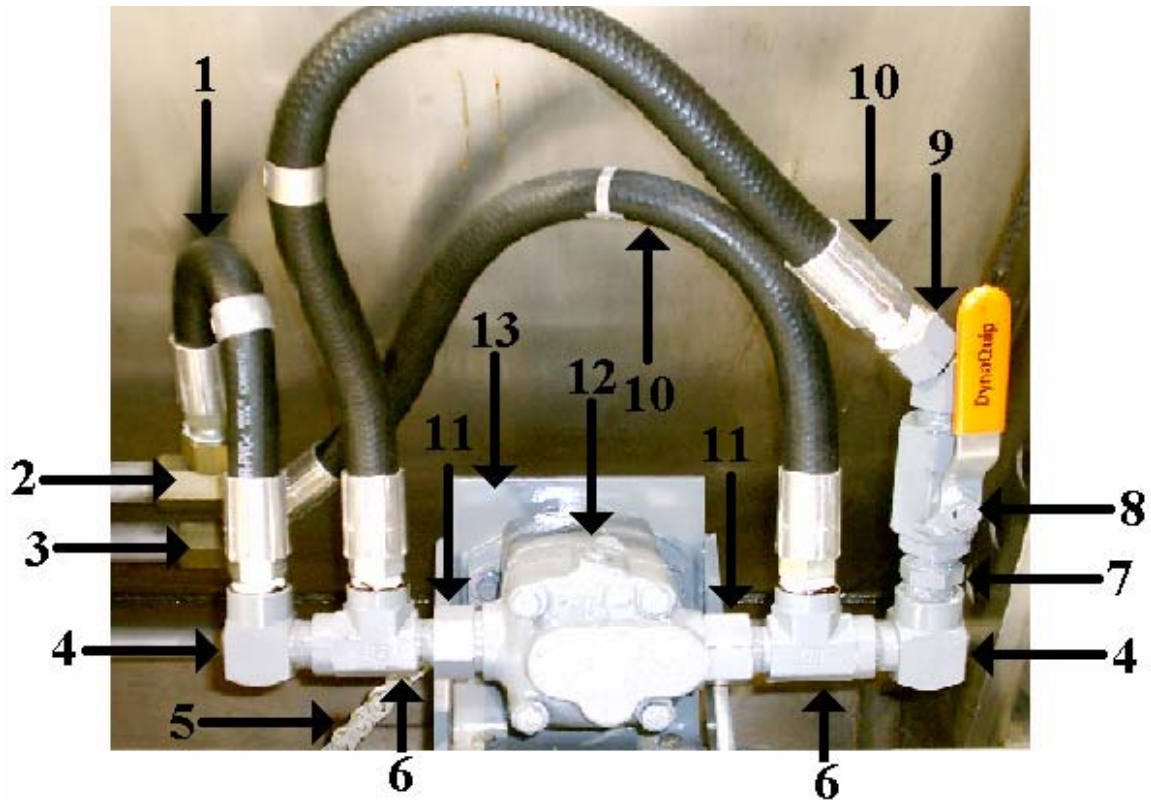
<u>Ref. #</u>	<u>Part Number</u>	<u>Description</u>	<u>Qty</u>
1	S-6-6	Relief Valve	1
2	S-6-54	3/4 x 45 Male Adapter	1
3	S-6-97	3/4 Hex Nipple	2
4	S-6-35	3/4 Tee	1
5	S-6-27	3/4 x 26 Hyd. Hose	2
6	S-6-55	1/2 x 45 Female Adapter	2
7	S-6-50	3/4 x 90 Male Adapter	2
8	S-6-53	3/4 x 90 Female Adapter	1
9	S-6-62	Flow Control Valve	1

Valve Assembly w/ Hyd. Unloading Motor



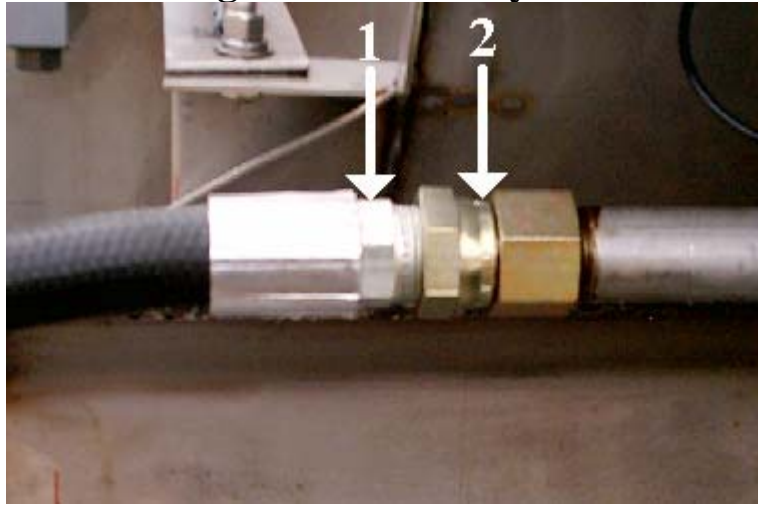
Ref. #	Part Number	Description	Qty.
1	S-6-6	Relief Valve	1
2	S-6-54	¾ x 45 Male Adapter	1
3	S-6-73	¾ x 108 Hyd. Hose	1
4	R-6-12	½ x 120 Hyd. Hose	2
5	S-6-53	¾ x 90 Female Adapter	3
6	S-6-97	¾ Hex Nipple	2
7	S-6-39	¾ x 15 Hyd. Hose	1
8	S-6-27	¾ x 26 Hyd. Hose	2
9	S-6-55	½ x 45 Female Adapter	2
10	S-6-50	¾ x 90 Male Adapter	2
11	S-6-62	Flow Control Valve	1
12	S-6-35	¾ Tee	1

Unloading Motor



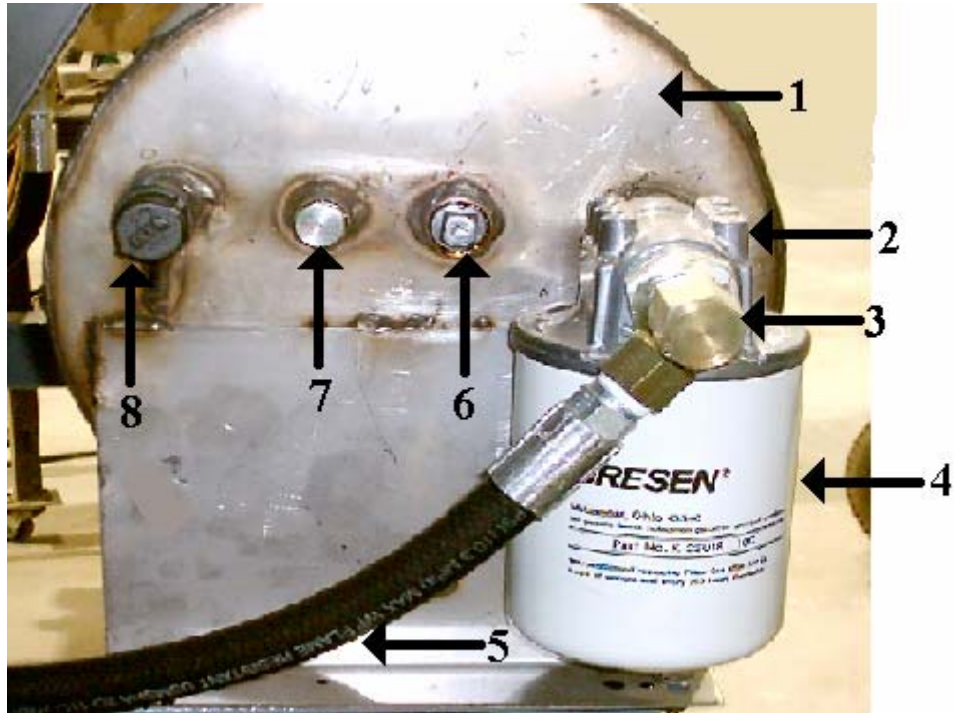
<u>Ref. #</u>	<u>Part Number</u>	<u>Description</u>	<u>Qty.</u>
1	S-6-39	3/4 x 15 Hyd. Hose	1
2	S-6-53	3/4 x 90 Female Adapter	1
3	S-6-61	3/4 x 45 Female Adapter	1
4	S-6-12	3/4 St. Elbow	2
5	S-3-28	#60 Roll Chain	1
6	S-6-16	3/4 Service Tee	2
7	S-6-97	3/4 Hex Nipple	1
8	S-6-34	3/4 Valve	1
9	S-6-54	3/4 x 45 Male Adapter	1
10	S-6-27	3/4 x 26 Hyd. Hose	2
11	S-6-181	3/4 Str. x 3/4 Female Bushing	2
12	S-7-17	Char Lynn Motor	1
13	S-16-8	Motor Mount Bracket	1
NS	S-3-13	10 T Sprocket	

Passenger Side Rear Hydraulics



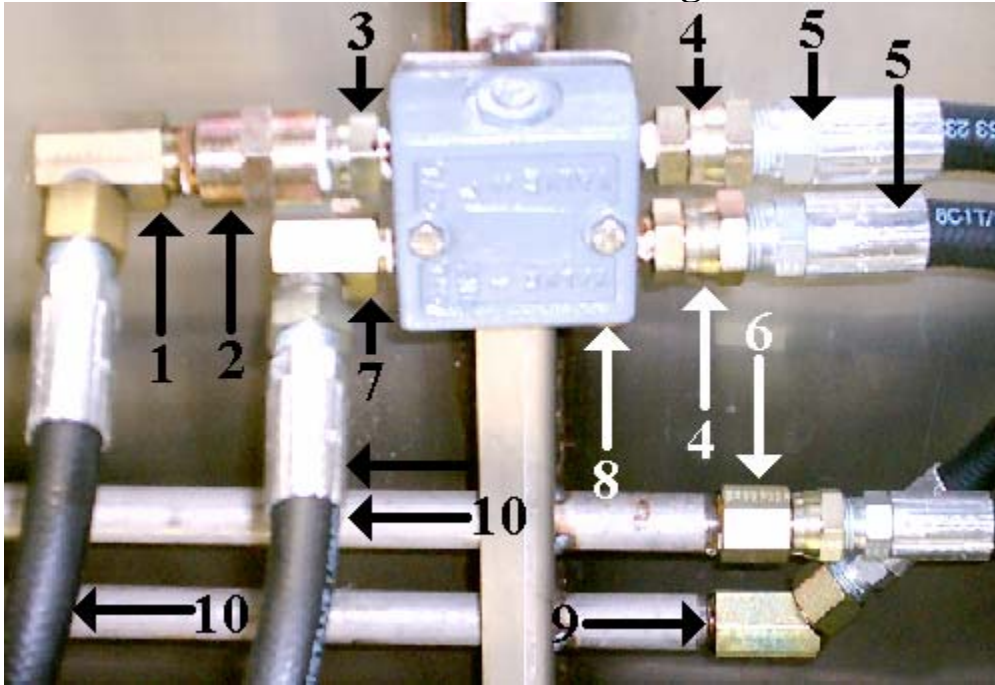
<u>Ref. #</u>	<u>Part Number</u>	<u>Description</u>	<u>Qty.</u>
1	S-6-27	$\frac{3}{4}$ x 26 Hyd. Hose	1
2	S-6-49	$\frac{3}{4}$ x Female Adapter	1

Oil Tank And Filter



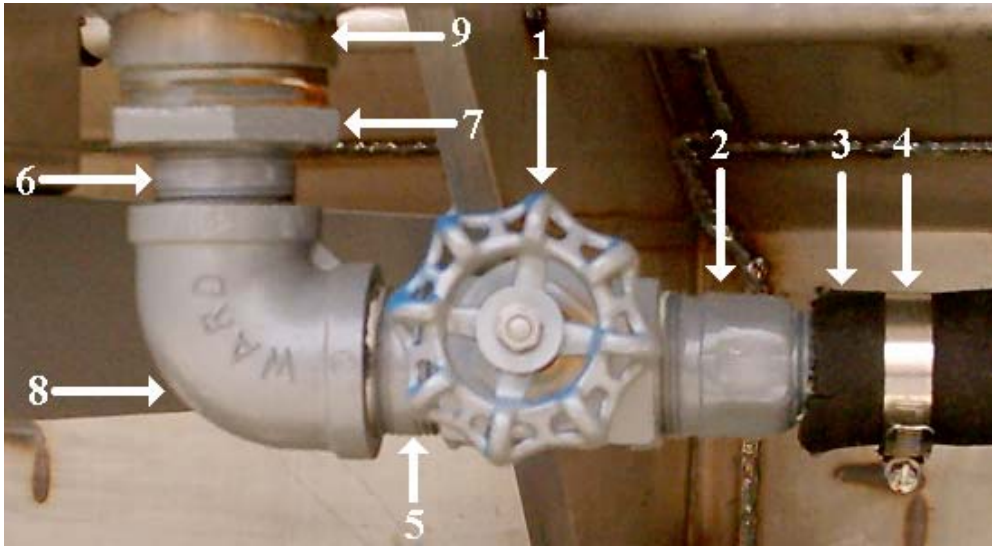
<u>Ref. #</u>	<u>Part Number</u>	<u>Description</u>	<u>Qty.</u>
1	S-6-15	SS Hyd. Oil Tank	1
2	S-6-142	Filter Assembly	1
3	S-6-50	3/4 x 90 Male Adapter	1
4	S-6-114	Filter Element	1
5	S-6-60	3/4 x 96 Hyd. Hose	1
6	GS-146	1/2 SS Plug	1
7	GS-147	3/4 SS Plug	1
8	Gs-124	3/4 SS Cap	1
NS	S-6-11	1 1/4 x 3/4 Bushing	1

Lock Valve Plumbing



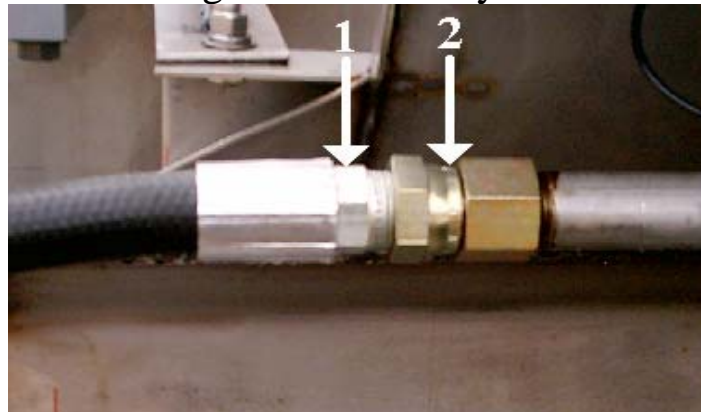
<u>Ref. #</u>	<u>Part Number</u>	<u>Description</u>	<u>Qty.</u>
1	S-6-126	½ x 90 Male Adapter	1
2	S-6-18	½ Coupling	1
3	S-6-123	¼ x ½ Hex Nipple	1
4	S-6-205	¼ x ½ Male Adapter	2
5	S-6-31	½ x 17 Hyd. Hose	2
6	S-6-48	½ Female Adapter	1
7	S-6-206	¼ x ½ x 90 Male Adapter	1
8	S-6-113	Lock Valve	1
9	S-6-55	½ x 45 Female Adapter	1
10	S-6-25	½ x 20 Hyd. Hose	2

Gate Valve Assembly



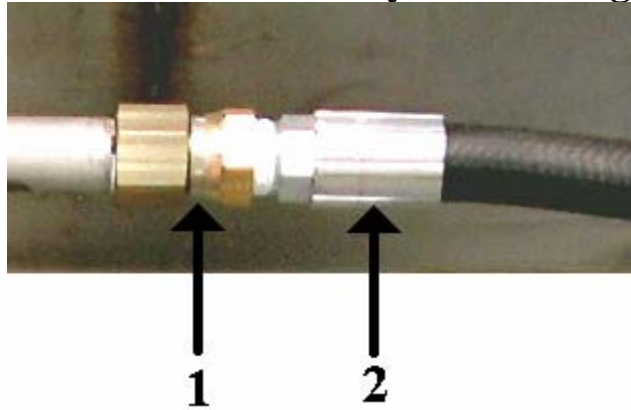
<u>Ref. #</u>	<u>Part Number</u>	<u>Description</u>	<u>Qty.</u>
1	S-6-33	Gate Valve	1
2	F-100	1 ¼ Hose Barb	1
3	F-118	1 ¼ Hose Clamp	1
4	S-6-63	1 ¼ Suction Hose	8'
5	GI-613	1 ¼ x Close Nipple	1
6	GI-613	1 ¼ x Close Nipple	1
7	S-6-168	Suction Strainer	1
8	GI-701	1 ¼ Elbow	1
9	S-6-15	Stainless Oil Tank	1

Passenger Side Rear Hydraulics



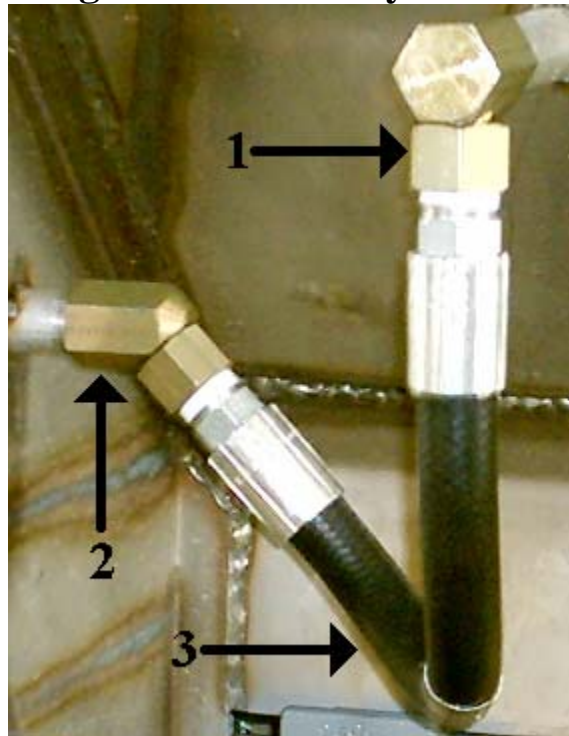
<u>Ref. #</u>	<u>Part Number</u>	<u>Description</u>	<u>Qty.</u>
1	S-6-27	¾ x 26 Hyd. Hose	1
2	S-6-49	¾ x Female Adapter	1

Drivers Side Rear Hyd. Plumbing



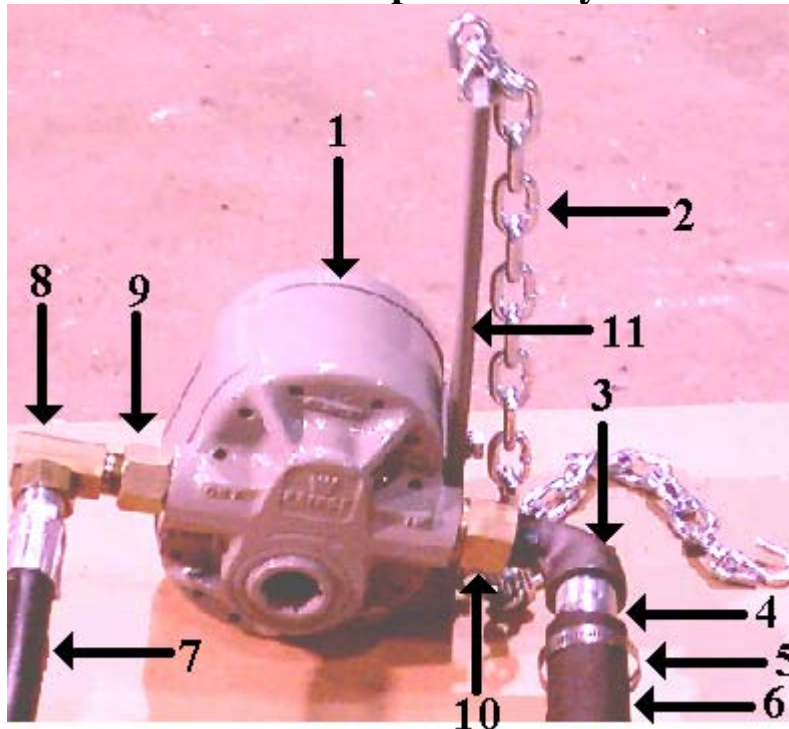
<u>Ref. #</u>	<u>Part Number</u>	<u>Description</u>	<u>Qty.</u>
1	S-6-49	3/4 Female Adapter	1
2	S-6-27	3/4 x 26 Hyd. Hose	1

Passenger Side Front Hyd. Plumbing



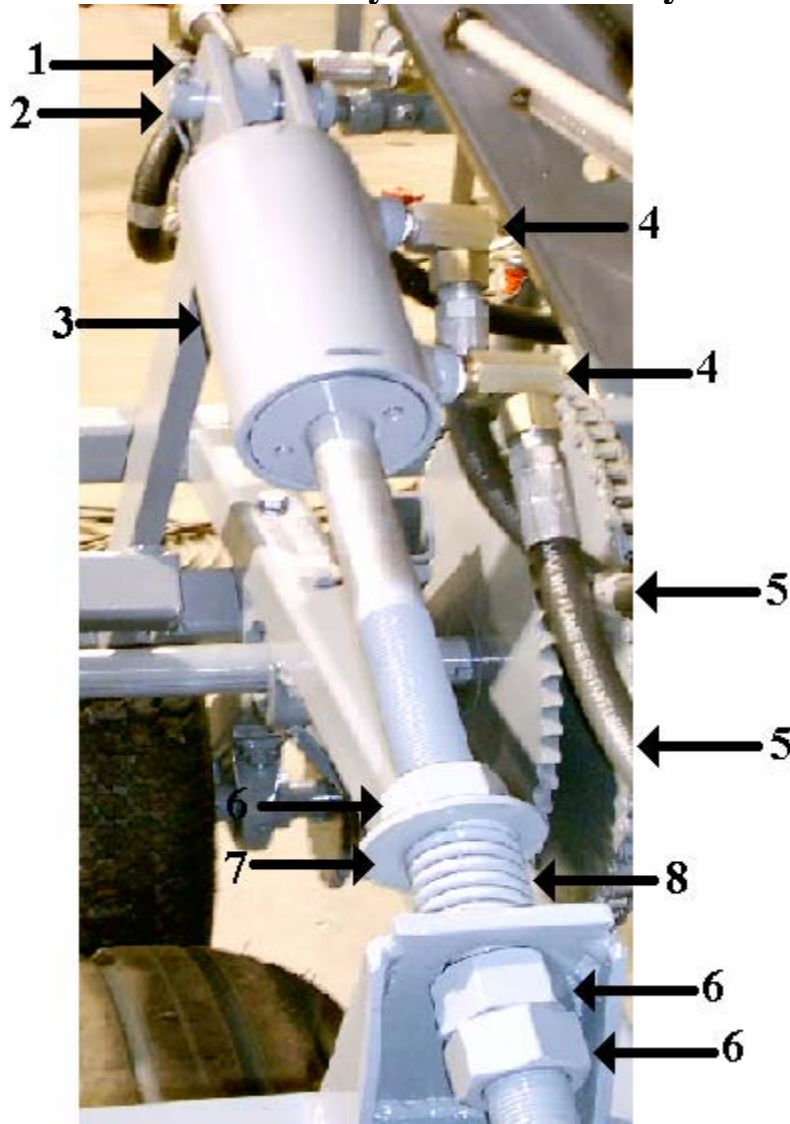
<u>Ref. #</u>	<u>Part Number</u>	<u>Description</u>	<u>Qty.</u>
1	S-6-53	3/4 x 90 Female Adapter	1
2	S-6-61	3/4 x 45 Female Adapter	1
3	S-6-39	3/4 x 15 Hyd. Hose	1

PTO Pump Assembly



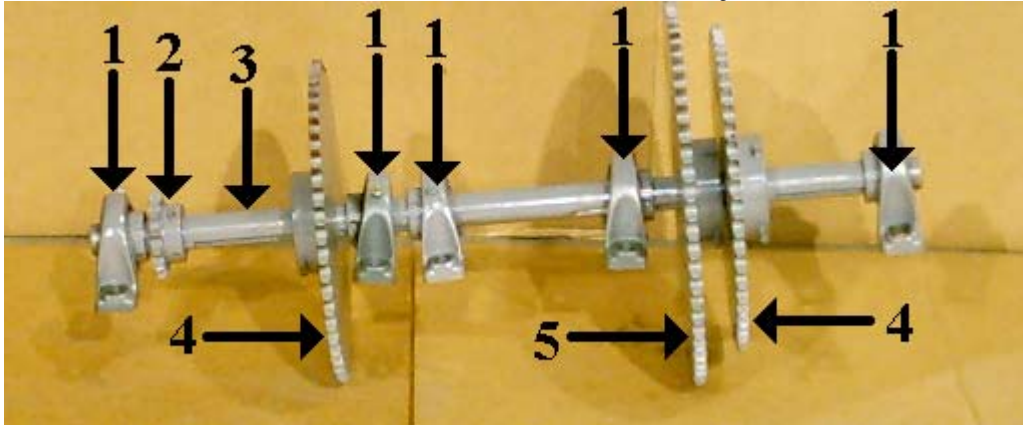
<u>Ref. #</u>	<u>Part Number</u>	<u>Description</u>	<u>Qty.</u>
1	R-6-5	540 PTO Pump	1
1A	R-6-5A	1000 PTO Pump	1
2	A-1-16	Safety Chain	2 ½'
3	G-I-489	1" Street Elbow	1
4	F-102	1 x 1 ¼ Hose Barb	1
5	F-118	1 ¼ Hose Clamp	1
6	S-6-63	1 ¼ Suction Hose	10'
7	S-6-60	¾ x 96 Hyd. Hose	1
8	S-6-50	¾ x 90 Male Adapter	1
9	R-6-9	1 x ¾ O-ring Adapter	1
10	R-6-10	1 x 1 O-ring Adapter	1
11	R-6-8	Torque Arm	1
NS	A-1-7	S Hooks	2
NS	R-6-5A	Pump Repair Kit	1

Press Wheel Cylinder Assembly



<u>Ref. #</u>	<u>Part Number</u>	<u>Description</u>	<u>Qty.</u>
1	S-6-76A	Cotter Pin	1
2	S-6-76	Cylinder Pin	1
3	S-6-5	Hydraulic Cylinder	1
4	S-6-126	1/2 x 90 Male Adapter	2
5	S-6-25	1/2 x 20 Hyd. Hose	2
6	S-6-43A	1 1/8 SS, NF Nut	3
7	S-3-22	1 1/8 SS Flat Washer	1
8	S-3-21	Spring	1

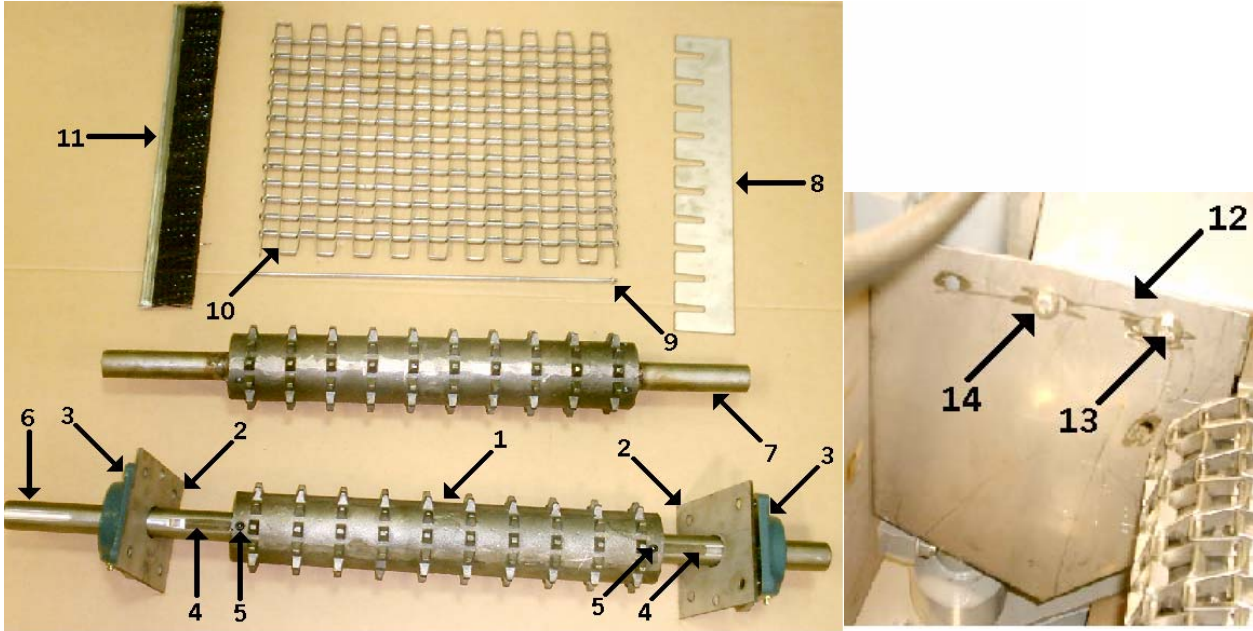
Counter Shaft Assembly



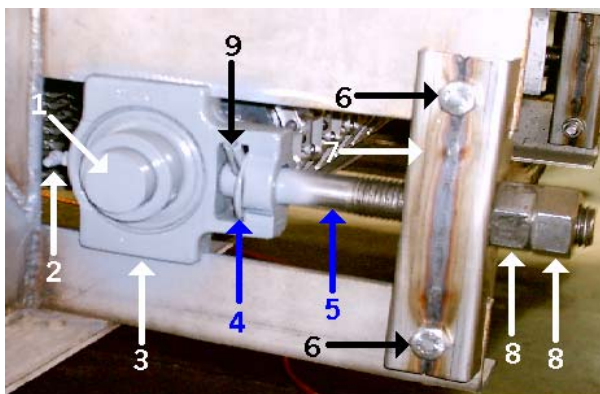
<u>Ref. #</u>	<u>Part Number</u>	<u>Description</u>	<u>Qty.</u>
1	S-3-4	Pillow Block Bearing	5
2	S-3-8	14 Tooth Sprocket	1
3	S-3-2	Counter Shaft	1
4	S-3-7	54 Tooth Sprocket	2 *
5	S-3-12	65 Tooth Sprocket	1
NS	S-3-18	5/16 Key Stock	4
NS	S-5-15	5/16 Roll Pin	1

* A quantity of two 54 tooth sprockets are required if spreader has an unloading motor.

Conveyor Chain Assembly

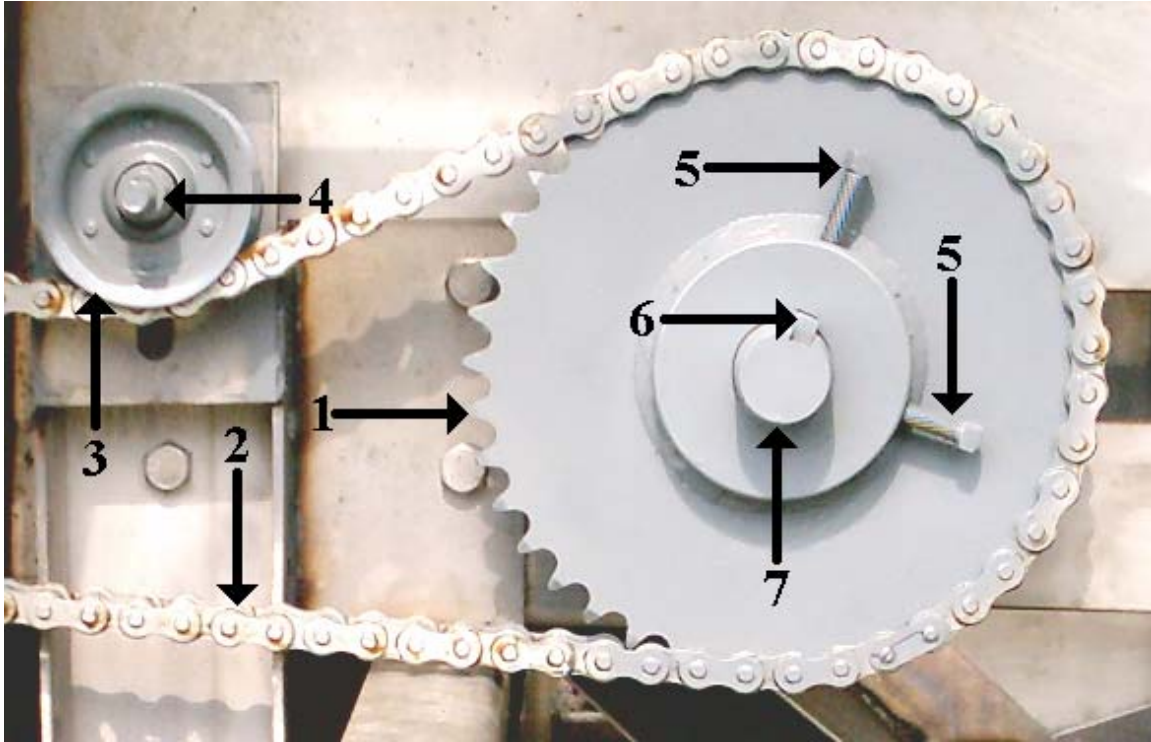


<u>Ref. #</u>	<u>Part #</u>	<u>Description</u>	<u>Qty.</u>
1	S-2-6	rear roller sprocket	1
2	S-2-5	ss bearing Backplate	2
3	S-2-4	4 bolt flange bearing	2
4	S-2-12	key	2
5	S-4-7	3/8 set screw	4
6	S-7-2	rear conveyor shaft	1
7	S-2-21	front idler sprocket w/ shaft	1
8	S-1-101	pan splice	1
9	S-2-15	connecting pin	1
10	S-2-14	conveyor chain	per foot
10a	S-2-1	conveyor chain 11' body	1
10b	S-2-27	conveyor chain 13' body	1
11	S-1-143	wipe out brush	1
12	S-4-33	side shield	2
13	N-26-0075	3/8 x 3/4 ss bolt	4
14	N-26-0003	3/8 ss flat washer	4
ns	N-26-0002	3/8 ss lock washer	4
ns	N-26-0001	3/8 ss nut	4



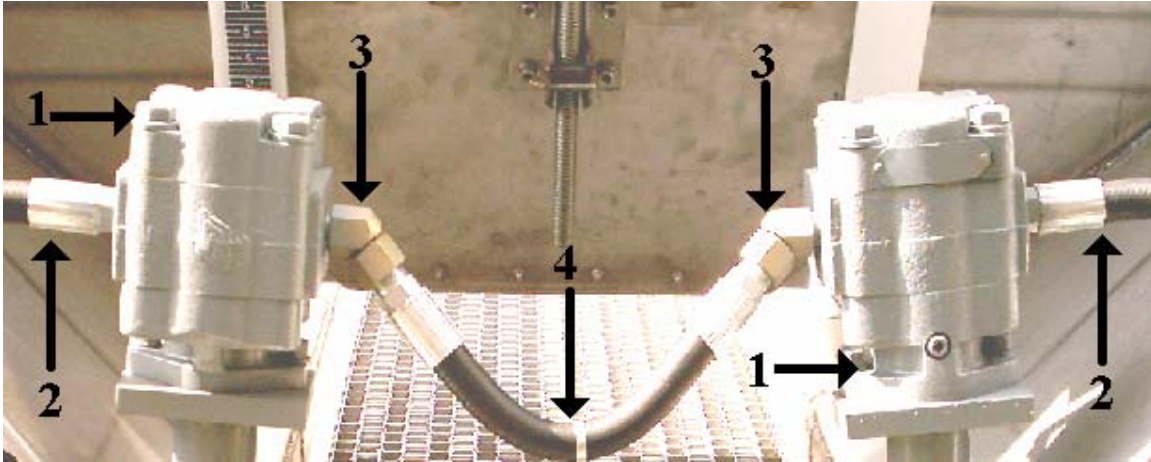
<u>Ref. #</u>	<u>Part #</u>	<u>Description</u>	<u>Qty.</u>
1	S-2-21	idler sprocket w/ shaft	1
2	S-6-140	90 x zerk fitting	2
3	S-2-10	1 1/4 take up bearing	2
4	S-2-19	1" ss flat washer	2
5	S-2-17	take up rod	2
6	N-28-0250	1/2 x 2 1/2 ss bolt	4
7	S-2-8	take up member	2
8	S-2-18	1" ss nut	4
9	S-2-22	ss roll pin	2
ns	N-28-0002	1/2 ss lock washer	4
ns	N-28-0001	1/2 ss nut	4

Drive Sprocket Assembly



<u>Ref. #</u>	<u>Part Number</u>	<u>Description</u>	<u>Qty.</u>
1	S-2-7	40 T Sprocket	1
2	R-3-32	#60 Roll Chain	1
3	S-3-20	Idler Pulley	1
4	N-38-350	1/2 x 3 1/2 Carriage Bolt	1
5	S-2-16	3/8 x 2 Sq. Head Set Screw	2
6	S-2-12	3/8 x 2 Key	1
7	S-2-2	Conveyor Shaft	1

Spinner Motor Assembly

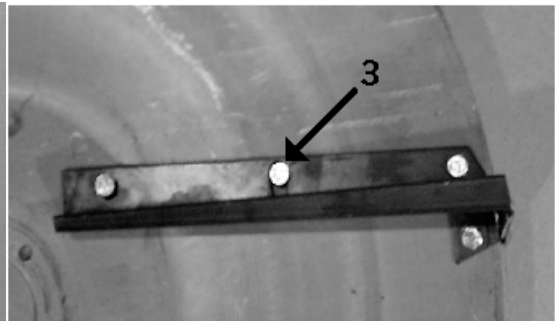
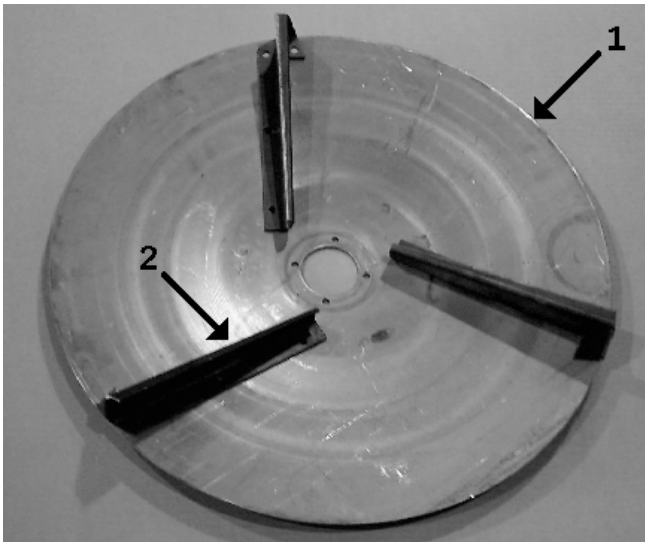


<u>Ref. #</u>	<u>Part Number</u>	<u>Description</u>	<u>Qty.</u>
1	S-6-212	6 Spline Spinner Motor	2
2	S-6-27	$\frac{3}{4}$ x 26" Hyd. Hose	2
3	S-6-54	$\frac{3}{4}$ x 45 Male Adapter	2
4	S-6-39	$\frac{3}{4}$ x 15" Hyd. Hose	1



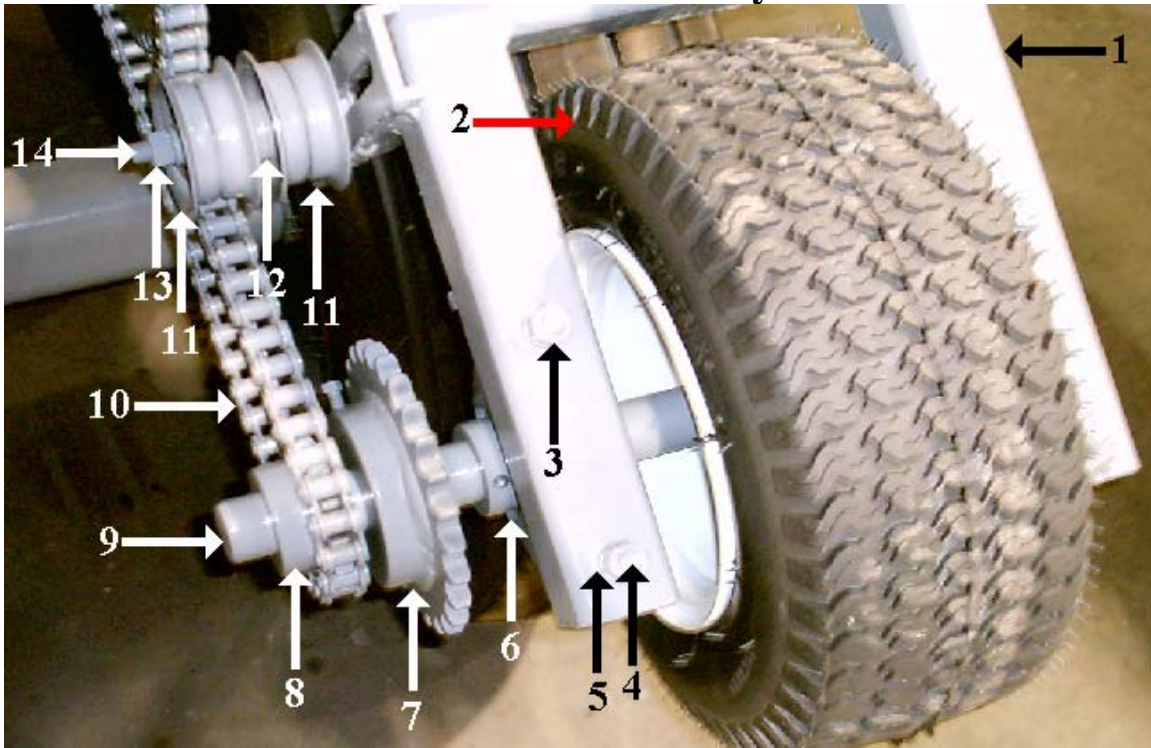
<u>Ref. #</u>	<u>Part #</u>	<u>Description</u>	<u>Qty.</u>
1	SG-5-10	spinner housing	2
2	S-5-3	spinner shaft (6 tooth)	2
3	S-5-4	thrust bearing	2
4	S-5-7	lock ring	2
5	S-5-15	ss roll pin	2
6	S-5-11	spinner hub	2
7	S-5-6	key	2
8	S-5-5	seal	2

Spinner Plate Assembly



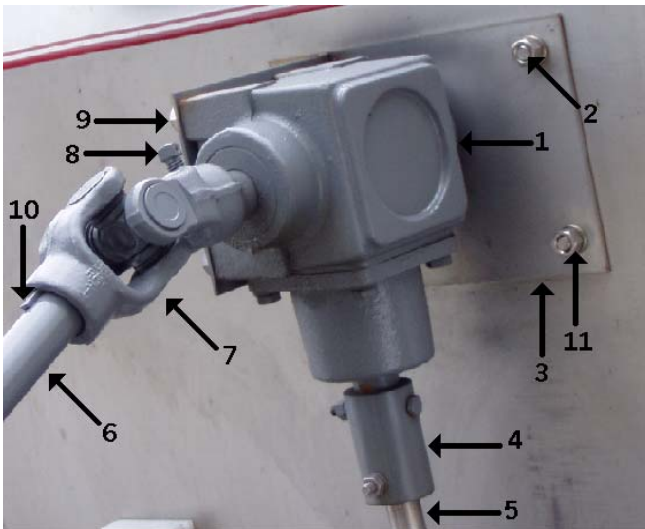
<u>Ref. #</u>	<u>Part #</u>	<u>Description</u>	<u>Qty.</u>
1	S-4-29S	right plate ss	1
	S-4-29	right plate steel	
1	S-4-30S	left plate ss	1
	S-4-30	left plate steel	
2	S-4-26	right blade	3
2	S-4-27	left blade	3
2	S-4-80	right hard blade	3
2	S-4-81	left hard blade	3
3	S-4-68	blade bolt kit	1
ns	S-4-83	plate bolt kit	1

Presswheel Assembly



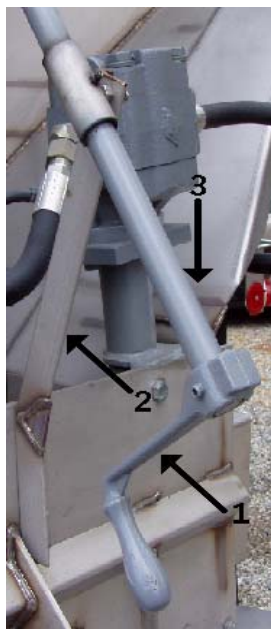
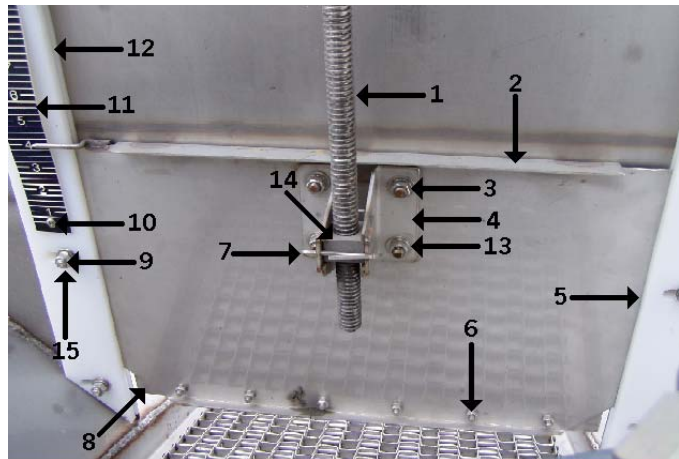
<u>Ref. #</u>	<u>Part Number</u>	<u>Description</u>	<u>Qty.</u>
1	R-3-37	Presswheel Frame	1
2	S-3-3	Tire Only	1
2A	S-3-18	Tire and Wheel	1
3	N-18-0001	½ Nut	4
4	N-18-0350	½ x 3 ½ Bolt	4
5	N-18-0002	½ Lock Washer	4
6	S-3-4	Pillowblock Bearing	2
7	S-3-6	26 Tooth Sprocket	1
8	S-3-8	14 Tooth Sprocket	1
9	S-3-36	Axle w/Flange	1
10	S-3-32	#60 Chain (104 Pitches)	1
11	S-3-20	Idler Pulley	2
12	N-18-0004	½ Flat Washer	5
13	N-18-0001	½ Nut	1
14	N-38-0450	½ x 4 ½ Carriage Bolt	1
NS	S-3-18	5/16 x 2 Key	2

Adjustable Gate



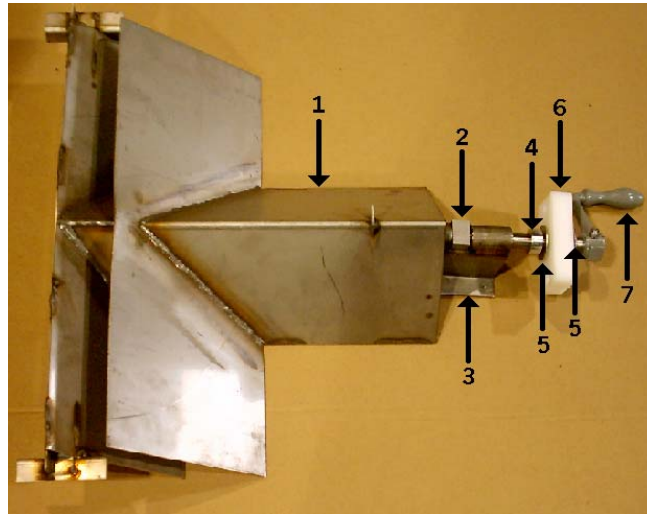
<u>Ref. #</u>	<u>Part #</u>	<u>Description</u>	<u>Qty.</u>
1	R-4-12	gearbox	1
2	N-26-0100	3/8 x 1" ss bolt	4
3	S-1-130	gearbox bracket	1
4	S-1-36	gate rod coupling	1
5	S-1-33	gate rod	1
6	R-3-45	ext. shaft	1
7	R-3-4	1" u-joint	1
8	R-3-4A	square head set screw	2
9	N-26-0075	3/8 x 3/4 ss bolt	4
10	R-3-5	1/4 woodruff key	2
11	N-26-0001	3/8 ss nut	4
ns	N-26-0002	3/8 ss lock washer	8
ns	S-1-19	gearbox backplate	1

<u>Ref. #</u>	<u>Part #</u>	<u>Description</u>	<u>Qty.</u>
1	S-1-33	gate rod	1
2	S-1-38	gate	1
3	N-26-0001	3/8 ss nut	10
4	S-1-35	gate nut holder	1
5	S-1-98R	right gate track	1
6	N-24-0075	1/4 x 3/4 ss bolt	6
7	S-1-35A	ss cotter pin	1
8	S-1-23	gate shear strip	1
9	N-26-0150	3/8 x 1 1/2 ss bolt	6
10	S-1-5A	ss screw	2
11	S-1-5	gate scale	1
12	S-1-99L	left gate track	1
13	N-26-0002	3/8 ss lock washer	10
14	S-1-34	gate rod nut	1
15	N-26-0003	3/8 flat washer	6

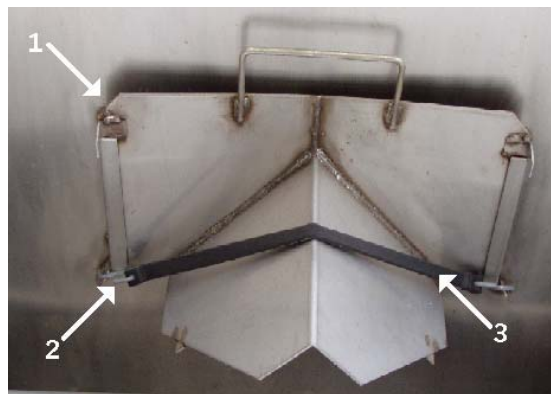


<u>Ref. #</u>	<u>Part #</u>	<u>Description</u>	<u>Qty.</u>
1	S-1-110	handle	1
2	S-1-168	gate ext. bracket	1
3	R-3-45	ext. shaft	1
ns	N-26-0100	3/8 x 1" ss bolt	2
ns	N-26-0001	3/8 ss nut	2
ns	N-26-0002	3/8 ss lock washer	2

Slide Assembly And Fertilizer Insert

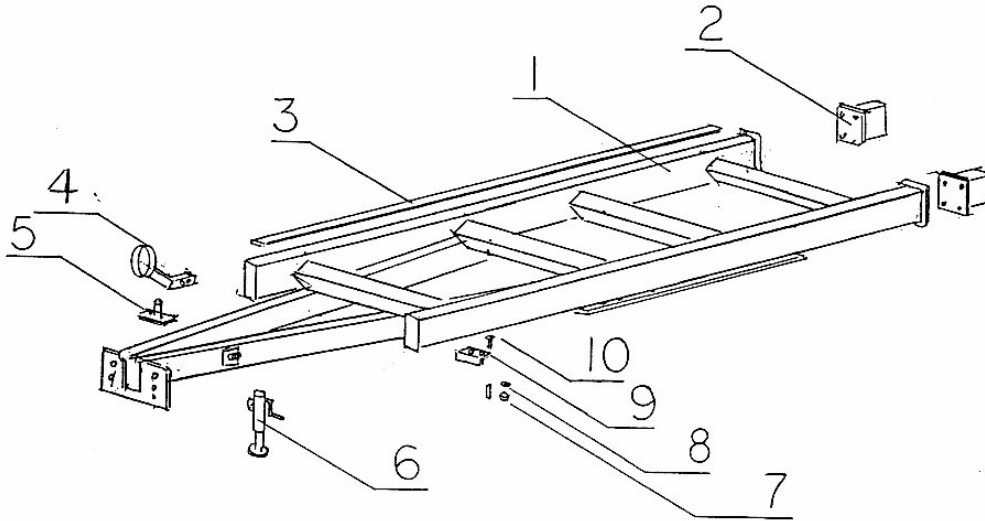


<u>Ref. #</u>	<u>Part #</u>	<u>Description</u>	<u>Qty.</u>
1	S-4-41	slide	1
2	S-1-34	gate rod nut	1
3	S-4-56	slide nut holder	1
4	S-4-54	¾ set collar	1
5	S-4-32	¾ ss flat washer	2
6	S-4-53	bearing	1
7	S-4-55	handle w/hardware	1
ns	S-4-66	pointer	1
ns	N-26-0125	3/8 x 1¼ ss bolt	2
ns	N-26-0001	3/8 ss nut	2
ns	N-26-0002	3/8 ss lock washer	2
ns	N-26-0003	3/8 ss flat washer	2
ns	N-24-0075	¼ x ¾ ss bolt	4
ns	N-24-0002	¼ ss lock washer	4



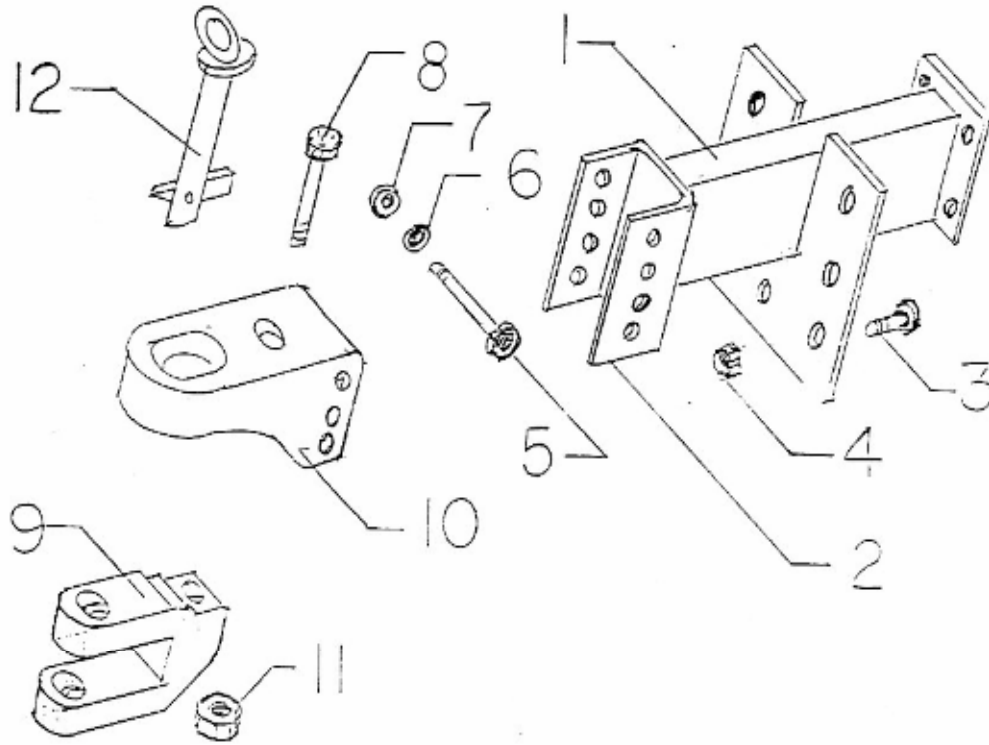
<u>Ref. #</u>	<u>Part #</u>	<u>Description</u>	<u>Qty.</u>
1	S-4-42	insert	1
2	S-12-4	s-hook	2
3	S-12-7	rubber strap	1

FRAME ASSEMBLY



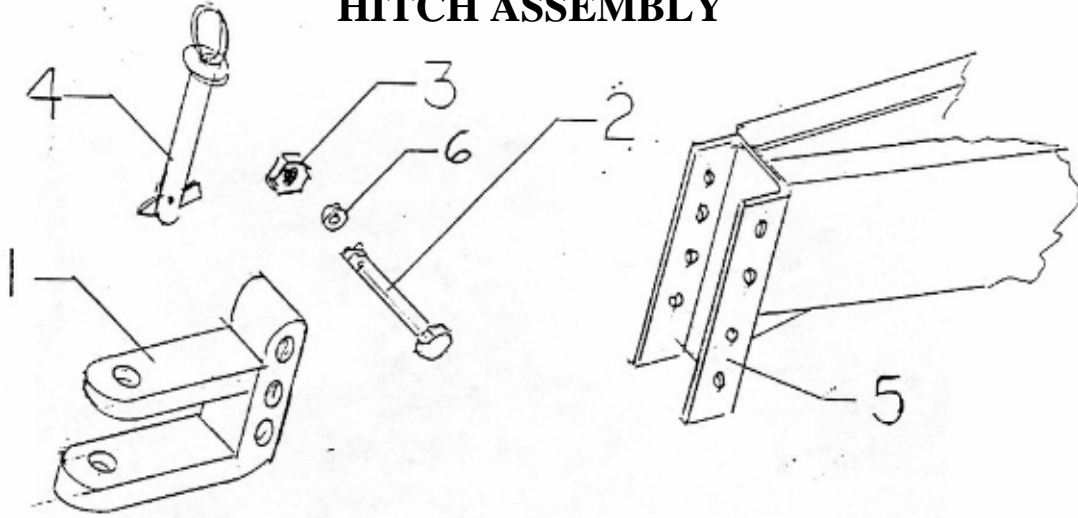
<u>Ref. #</u>	<u>Part Number</u>	<u>Description</u>	<u>Qty.</u>
1	R-1-74	Universal Frame	1
2	R-1-74Q	Frame Extension (509)	2
3	S-1-6	Chassis Pad	2
4	RY-1-100	Hose Holder	1
5	R-6-3	Pump Holder (540)	1
6	L-31	Tongue Jack	1
7	N-18-0001	½ Hex Nut	8
8	N-18-0002	½ Hex Lock Washer	8
9	S-1-24	Body Anchor Angle	4
10	N-18-0900	½ x 9 Bolt	8
NS	R-1-99	Drop Leg Jack (507 HC)	1

HITCH ASSEMBLY (NEW STYLE)

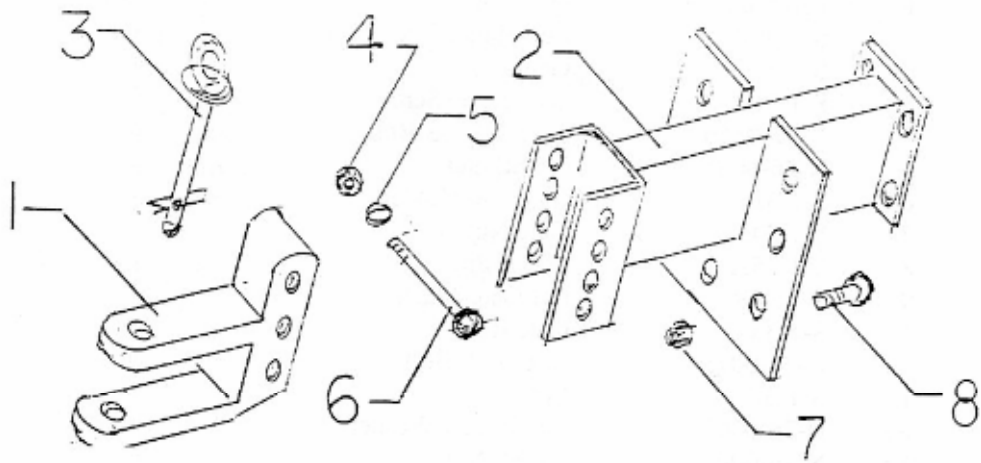


<u>Ref. #</u>	<u>Part Number</u>	<u>Description</u>	<u>Qty.</u>
1	R-1-91	Hitch Adapter	1
2	R-1-111A	Hitch Bracket	1
3	N-110-0200	5/8 x 2 Bolt	7
4	N-110-0004	5/8 Lock Nut	7
5	N-110-0600	5/8 x 6 Bolt	3
6	N-110-0002	5/8 Lock Washer	3
7	N-110-0001	5/8 Nut	3
8	R-1-111D	Cap Screw	1
9	R-1-111C	Hitch Clevis	1
10	R-1-111B	Hitch Base	1
11	R-1-111E	Lock Nut	1
12	L-51	Hitch Pin	1

HITCH ASSEMBLY

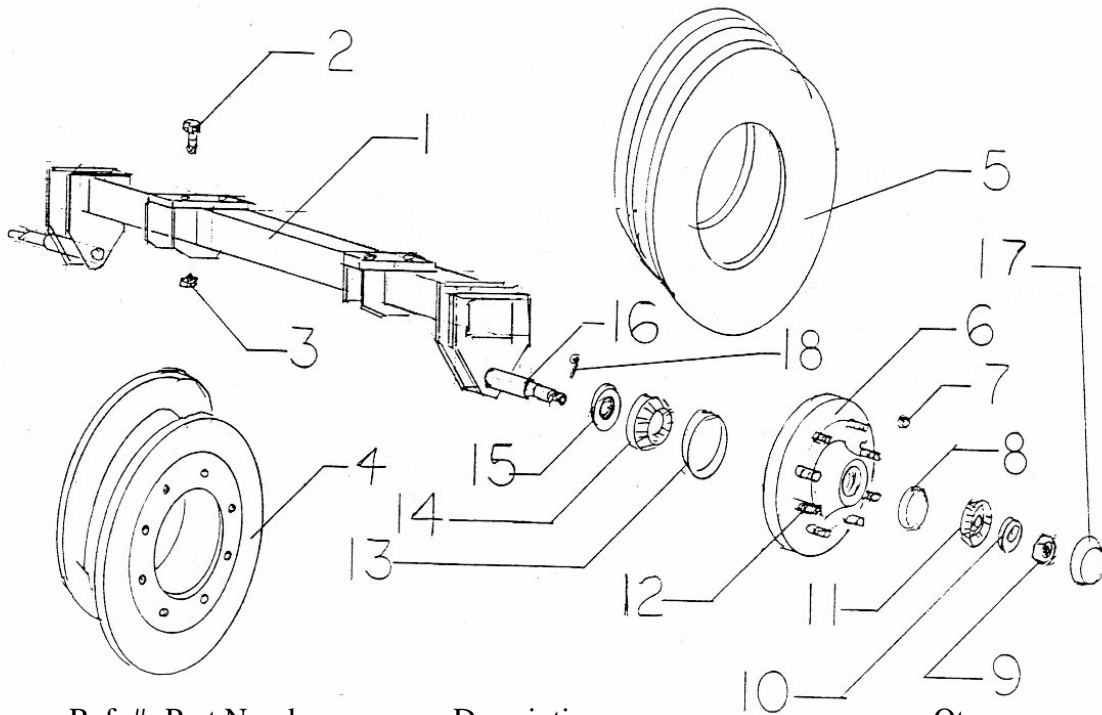


<u>Ref. #</u>	<u>Part Number</u>	<u>Description</u>	<u>Qty.</u>
1	P-10	Hitch Clevis	1
2	N-18-0450	½ x 4 ½ Bolt	3
3	N-18-0001	½ Nut	3
4	L-51	Hitch Pin	1
5	PY-26	Hitch Holder	1
6	N-18-0002	½ Lock Washer	3



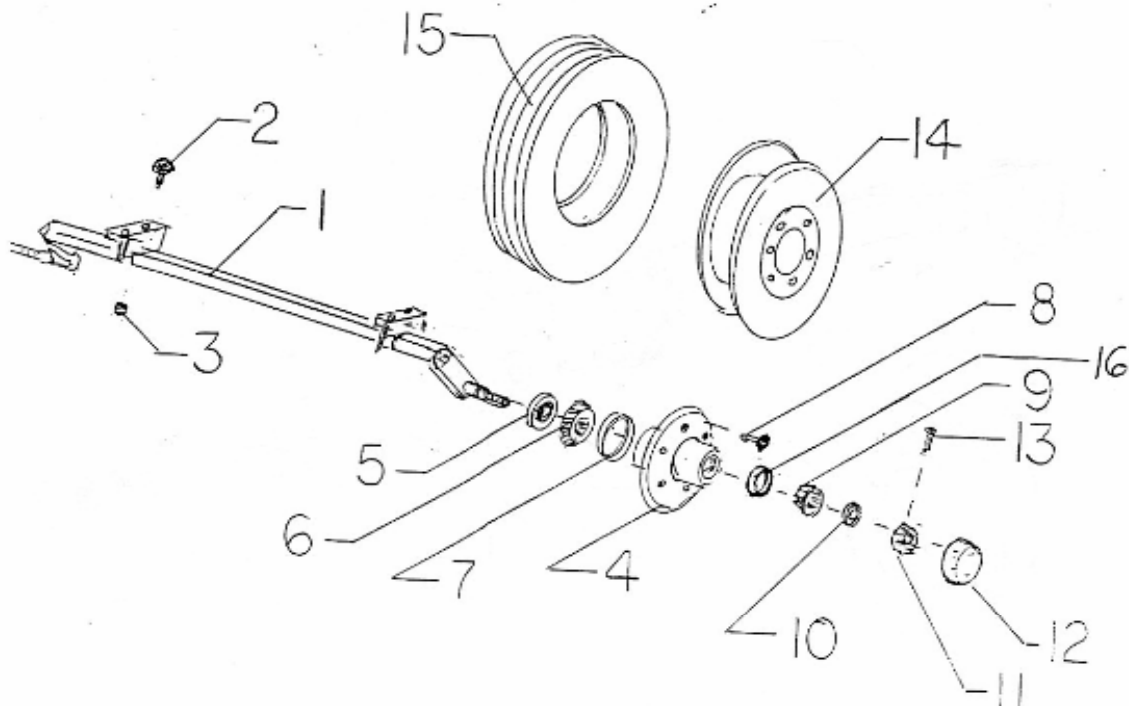
<u>Ref. #</u>	<u>Part Number</u>	<u>Description</u>	<u>Qty.</u>
1	P-10	Hitch Clevis	1
2	R-1-91	Hitch Adapter	1
3	L-51	Hitch Pin	1
4	N-18-0001	½ Nut	3
5	N-18-0002	½ Lock Washer	3
6	N-18-0450	½ x 4 ½ Bolt	3
7	N-110-0004	5/8 Lock Nut	7
8	N-110-0200	5/8 x 2 Bolt	7

AXLE ASSEMBLY 507/507 HC



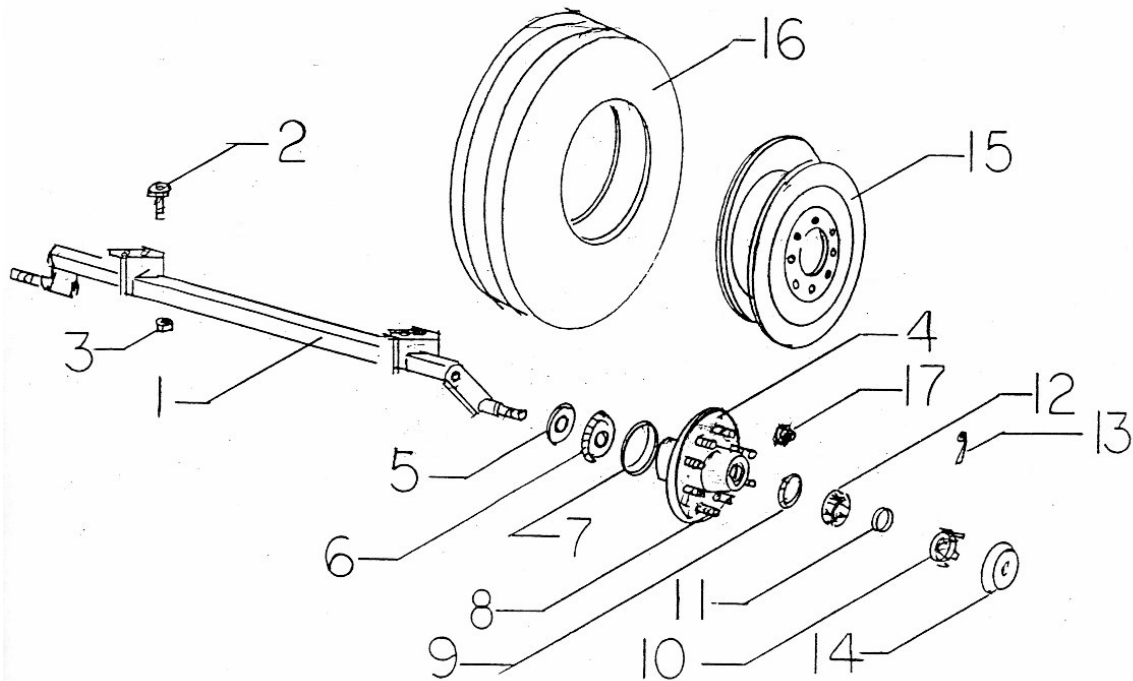
<u>Ref. #</u>	<u>Part Number</u>	<u>Description</u>	<u>Qty.</u>
1	R-1-80	72" Single Axle	1
1	R-1-80A	76" Single Axle	1
1	R-1-80B	72" High Clearance Axle	1
1	R-1-80C	76" High Clearance Axle	1
2	N-19-0250	5/8 x 2 1/2 Bolt	4
3	N-110-0004	5/8 Lock Nut	4
4	R-1-55	11C x 16.1 Wheel (507)	2
4	R-1-85	24 x 10 Wheel (507HC)	2
5	R-1-35	16.5L x 16.1 Tire (507)	2
5	R-1-86	11.25 x 24 Tire (507HC)	2
6	R-1-30	Hub Assembly Includes (8,11,13,14,15,17)	2
7	R-1-30B	Lug Nut	16
8	R-1-42	Outer Race	2
9	L-137	Spindle Nut	2
10	L-139	Spindle Washer	2
11	R-1-41	Outer Bearing	2
12	R-1-30B	Wheel Stud	16
13	R-1-40	Inner Race	2
14	R-1-39	Inner Bearing	2
15	R-1-43	Wheel Seal	2
16	R-1-31	Spindle, Includes (9,10)	2
17	R-1-44	Dust Cap	2
18	L-147	Cotter Pin	2

AXLE ASSEMBLY 508



<u>Ref. #</u>	<u>Part Number</u>	<u>Description</u>	<u>Qty.</u>
1	R-1-3	6500# Axle, Includes (4)	2
2	N-110-0200	5/8 x 2 1/2 Bolt	8
3	N-110-0004	5/8 Lock Nut	8
4	R-1-3C	Hub, Includes (5,6,7,9,12,16)	4
5	R-1-3F	Seal	4
6	R-1-17	Inner Bearing	4
7	R-1-18	Inner Race	4
8	L-126	Lug Bolt	24
9	L-124	Outer Bearing	4
10	R-1-3G	Spindle Washer	4
11	R-1-3F	Spindle Nut	4
12	L-48	Dust Cap	4
13	L-147	Cotter Pin	4
14	L-116	15 x 10 Wheel	4
15	R-1-34	12.5L x 15 Tire	4
16	L-198-1	Outer Race	4

AXLE ASSEMBLY 509



<u>Ref. #</u>	<u>Part Number</u>	<u>Description</u>	<u>Qty.</u>
1	R-1-14	8000# Axle	2
2	N-110-0200	5/8 x 2 Bolt	4
3	N-110-0004	5/8 Lock Nut	4
4	R-1-25	Hub, Includes (5,6,7,9,12,14)	4
5	R-1-14B	Wheel Seal	4
6	R-1-25B	Inner Bearing	4
7	R-1-25C	Inner Race	4
8	R-1-30B	Wheel Stud	32
9	L-1-198-2	Outer Race	4
10	L-1-3F	Spindle Nut	4
11	L-1-3G	Spindle Washer	4
12	L-124	Outer Bearing	4
13	L-147	Cotter Pin	4
14	L-148	Dust Cap	4
15	R-1-55	8 Bolt Wheel	4
16	R-1-73	14L x 16.1 Tire	4
17	R-1-14C	Lug Nut	32

TROUBLE SHOOTING

1. Problem: Material heavy behind spreader
Cause: Spinners too slow-not throwing material far enough
Correction: Check spinner speed with tach. and set to 750 RPM
2. Problem: Material heavy behind spreader
Cause: Delivery chute in the wrong location
Correction: Move the delivery chute forward (check measurements for adjusting the chute)
3. Problem: Material falling directly under the spreader
Cause: Pan splice may be worn
Correction: Replace the pan splice
4. Problem: Material too light behind spreader
Cause: Spinners may be too fast
Correction: Check spinner speed with tach. and set to 750 RPM
5. Problem: Material too light behind spreader
Cause: Delivery chute in the wrong location
Correction: Move the delivery chute toward the rear (check measurements for adjusting the chute)

NOTE: Make sure that the fertilizer insert is installed when spreading fertilizer.

.

LIMITED WARRANTY AND REMEDIES

General Fertilizer Equipment INC., warrants each of its products for a period of 90 day from the date of purchase by the original customer (end-user) under normal use and service.

This warranty provides that all products are free of defective materials and workmanship, however, it is limited to the replacement of any parts or the allowance of credit thereof, which within 90 day s from the date of purchase by the original customer, have been returned to GFE, transportation charges prepaid, and found to our satisfaction to be defective.

This warranty is void when repairs or alterations have been made to GFE products outside our factory.

Normal use and service does not include misuse, accident, vandalism, civil disturbance, war, flood, fire, earthquake, or other acts of God.

This warranty does not extend to the contents of any GFE machines, tanks or containers, or damages for injury to person or property caused by leakage or misapplication of such contents.

This warranty is the sole warranty of GFE, INC. The remedies are exclusive and in lieu of all other buyer remedies, either expressed or implied.

